

# VALID

## Getting to VALID's new office



### Our new address is

Level 1 /144 Langridge Street,  
Collingwood

Ph: (03) 9416 4003

We are open from 9am – 5pm, Monday to Friday



### Getting to VALID by taxi

There is an accessible parking bay on  
Langridge Street in front of the office.



## Getting to VALID by train

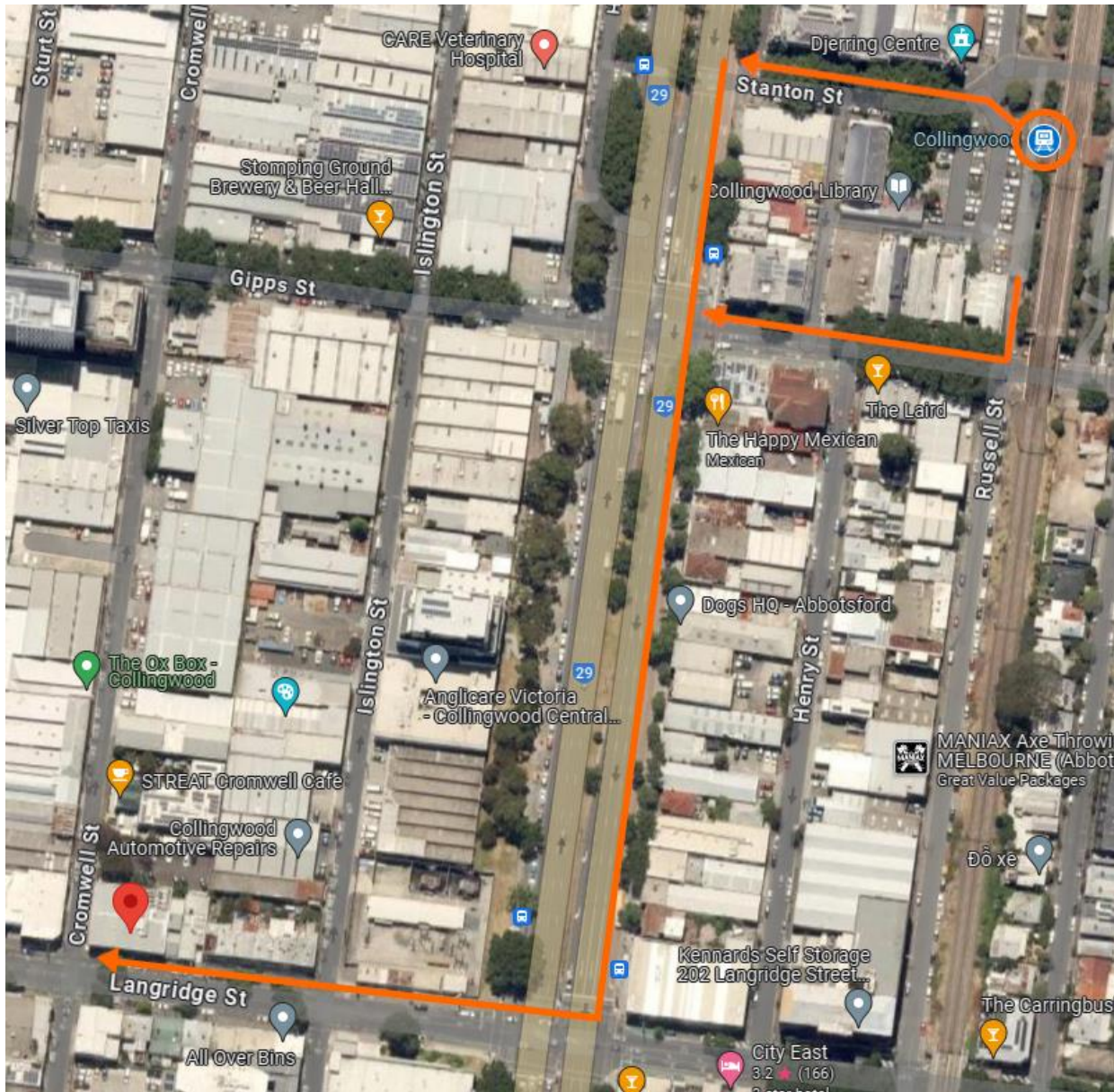
Catch a train to **Collingwood Station** in Abbotsford.

The **Hurtsbridge** and **Mernda** lines go through Collingwood Station.

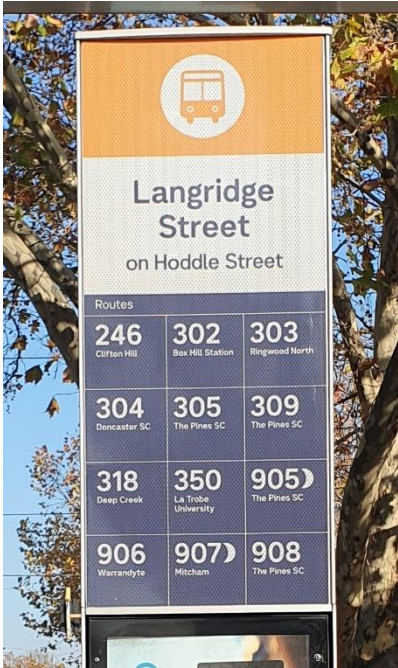


Towards the right side of the station, there are accessibility ramps going up to the platforms. You can see the entrance to both ramps from **Gipps Street**.





1. Exit the train station on **Stanton Street** or **Gipps Street**.
2. Go to the main road (**Hoddle Street**) and turn left.
3. Walk down **Hoddle Street** until you get to **Langridge Street** (about 250 metres). Turn right onto **Langridge Street**.
4. VALID's office is about 170 metres down the road at **144-152 Langridge Street**.

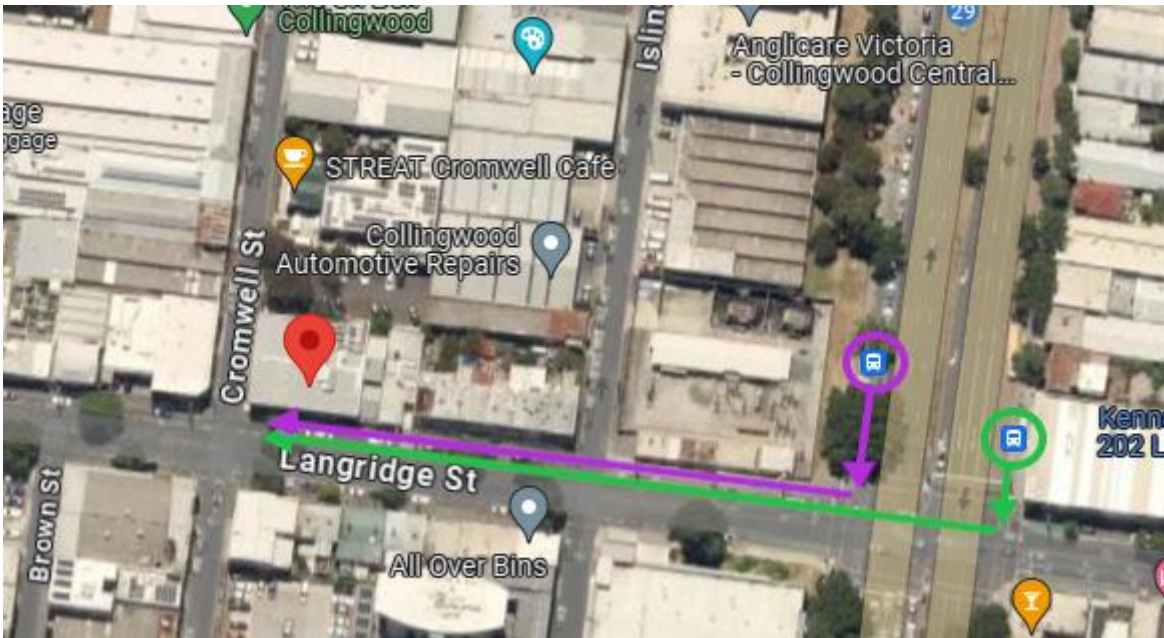


## Getting to VALID by bus

Take one of these buses... 246, 302, 303, 304, 305, 309, 318, 350, 906, 908.

Get off the bus at the **Langridge Street** stop on **Hoddle Street**.

Walk down **Hoddle Street** towards **Langridge Street** (15 to 30 metres, depending on which side of the road you are on).



Turn right onto **Langridge Street**.

VALID's office is about 170 metres down the road at **144-152 Langridge Street**.



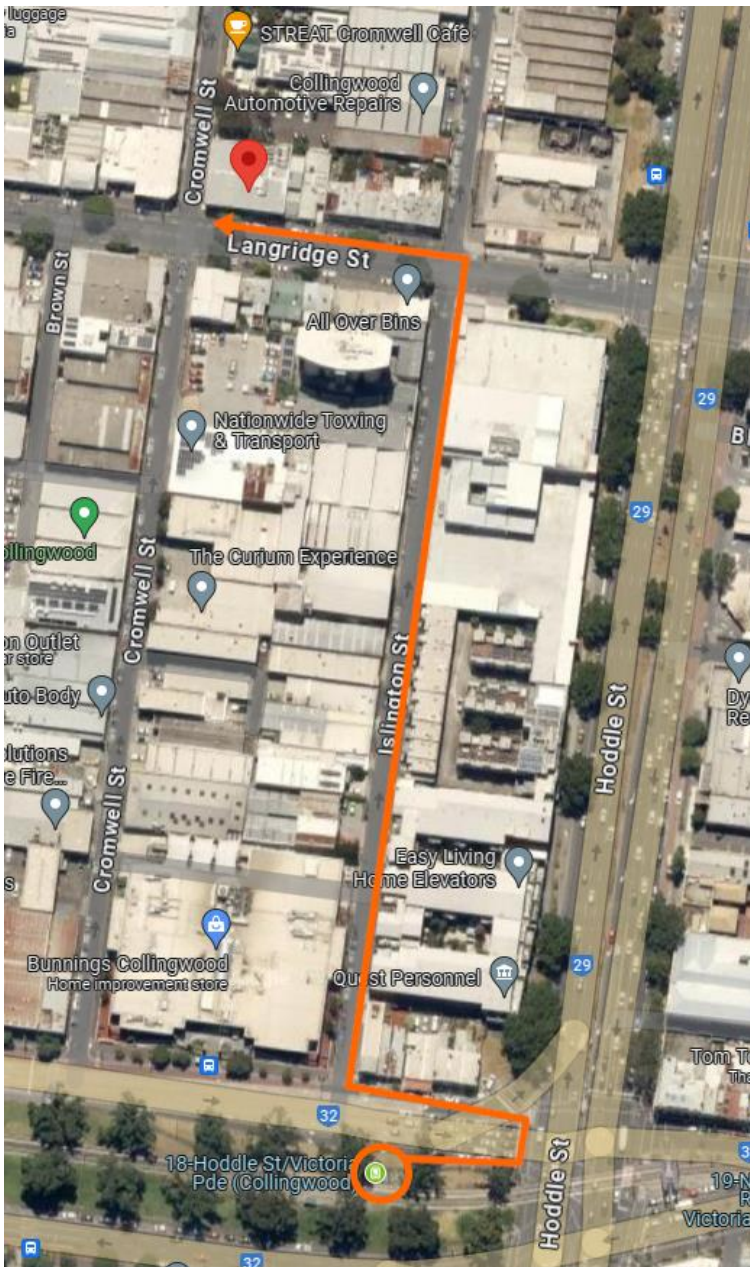


## Getting to VALID by tram

Catch a **109** or **12** tram to the **Hoddle Street** stop (#18).

PLEASE NOTE this is **NOT** an accessible tram stop.

You will need to cross **Victoria Parade**.



Take the first right turn onto **Islington Street** (just before Bunnings) and walk down to **Langridge Street** (about 280 metres).

Turn right onto **Langridge Street**.

VALID's office is about 90 metres down the road at **144-152 Langridge Street**.